

# GUILDHALL

SALES & LETTINGS



## 51 Princes Reach

Ashton-On-Ribble, Preston, PR2 2GA

Offers Over £190,000



**\*FOUR BEDROOMED DUPLEX APARTMENT OVERLOOKING THE MARINA WITH NO CHAIN DELAY\*\***

This impressive four-bedroom duplex apartment is perfectly positioned within the sought after Docklands area, offering generous and versatile accommodation across two floors with stunning marina views from three private balconies.

The ground floor comprises three well-proportioned bedrooms, including a spacious principal bedroom with en suite shower room and access to a private balcony, alongside a modern family bathroom and welcoming hallway.

Occupying the upper level is a bright and spacious open plan living dining area with direct access to two further balconies, and a fitted kitchen ideal for modern living and entertaining. A fourth bedroom is also located on this floor, providing flexible accommodation for guests, a home office, or additional family space.



## Ground Floor

Bedroom Two 11'35 x 10'93 (3.35m x 3.05m)

Bedroom Three 11'61 x 6'10 (3.35m x 2.08m)

Bedroom One 14'5 x 11'66 (4.39m x 3.35m)

En Suite 8'90 x 9'33 (2.44m x 2.74m)

Balcony 5'91 x 8'60 (1.52m x 2.44m)

Bathroom 9'22 x 9'41 (2.74m x 2.74m)

## First Floor

Open Plan Living Dining Area 20'12 x 21'3 (6.10m x 6.48m)

Balcony 9'72 x 10'36 (2.74m x 3.05m)

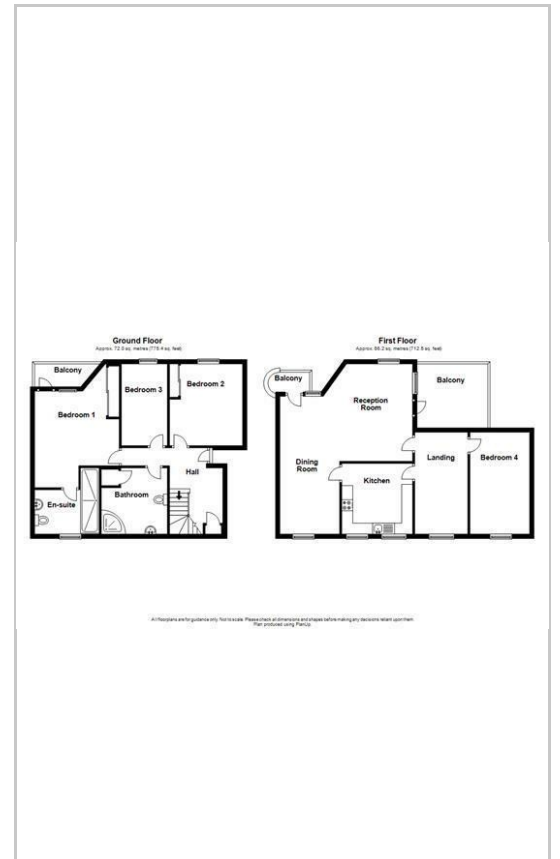
Kitchen 10'63 x 10'06 (3.05m x 3.20m)

Bedroom Four 13'51 x 8'19 (3.96m x 2.44m)

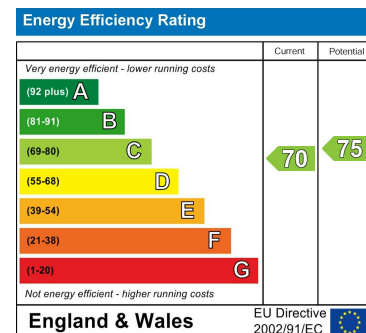
## Area Map



## Floor Plans



## Energy Efficiency Graph



These particulars, whilst believed to be accurate are set out as a general outline only for guidance and do not constitute any part of an offer or contract. Intending purchasers should not rely on them as statements of representation of fact, but must satisfy themselves by inspection or otherwise as to their accuracy. No person in this firm's employment has the authority to make or give any representation or warranty in respect of the property.

441 Blackpool Road, Preston, PR2 2LE

Tel: 01772769999 Email: <https://guildhalllettings.co.uk/>